

Port Madison Yacht Club

West Sound Corinthian Yacht Club

Bremerton Yacht Club

Port Orchard Yacht Club

Poulsbo Yacht Club

# West Sound Sailing Association



## 2011

### *Trophy Series*

Revised 11/28/2010 Rev (B)

## Table of Contents

<b>Preface .....</b>	<b>3</b>
Participating Boats in 2010 Series .....	3
WSSA Race Booklet Rule Changes for 2011 .....	4
Past West Sound Sailors of the Year and Their Yachts .....	5
Representatives 2011 .....	6
2011 WSSA Trophy Series Race Schedule .....	7
Activities Following Races .....	7
Other area Non-Series Races .....	8
<b>Notice of Race .....</b>	<b>9</b>
<b>Sailing Instructions .....</b>	<b>12</b>
<b>Individual race Announcements .....</b>	<b>14</b>
PMYC Jim Depue Memorial Race .....	14
POYC Annual Spring Shakedown .....	16
WSCYC Annual Rich Passage Ramble .....	18
PYC Poulsbo Invitational .....	20
POYC WSSA Invitational .....	22
BYC Annual Blake Island Race .....	24
WSCYC Brownsville Race .....	26
WSCYC Around Bainbridge Island Race (not part of series) .....	28
<b>Registration forms .....</b>	<b>29</b>
PMYC Jim Depue Memorial Race .....	29
POYC Annual Spring Shakedown .....	30
WSCYC Annual Rich Passage Ramble .....	31
PYC Poulsbo Invitational .....	32
POYC WSSA Invitational .....	33
BYC Annual Blake Island Race .....	34
WSCYC Brownsville Race .....	35
WSCYC Around Bainbridge Island Race (not part of series) .....	36

# **West Sound Sailing Association**

## **Trophy Series**

### **Preface**

*(Note: the preface is not part of the rules.)*

This year's cover features *Dulcinea*, a J-105 skippered by Matthew Gardner-Brown. Matthew placed first Overall in the 2010 WSSA Trophy Series, capturing the perpetual *West Sound Sailor of the Year* award.

The top 2011 WSSA Trophy Series boat will be featured on the cover of the 2012 WSSA Trophy Series sailing instruction booklet.

#### **Participating Boats in 2010 Series**

<b>Name</b>	<b>Sail #</b>	<b>Type</b>	<b>Rating</b>	<b>Owner</b>
<i>Alcyone</i>	none	Rawson 30	333	Blankenship
<i>Bamboo</i>	3	Skookum	228	Beste
<i>Emerald Lady</i>	3466	Catalina 27	222	Barrett
<i>Jabez</i>	59297	Ranger 30	210	Seibert
<i>Blue Angel</i>	C22	Catalina 24	204	Hunt
<i>Whisper</i>	79068	Catalina 30-3	201	Richmond
<i>Swan</i>	1008	Thunderbird 26	201	Davis
<i>Silent Running</i>	None	Pearson 28	201	Rush
<i>Aldebaran</i>	1093	Catalina 30	189	Pinion
<i>Falcon</i>	68	Cal 9.2	186	Massey
<i>Lady Liberty</i>	69294	Pearson 32	186	Bays
<i>Ethereal</i>	7	Nautilus 36	183	Throm
<i>Quest</i>	8022	Pearson 323	180	Wilkerson
<i>Absolutely</i>	611	Hunter 35	165	Thomas
<i>Decatur</i>	None	Panda 40	162	Albright
<i>Jerry Rig</i>	48158	Buchan 37	162	Hackett
<i>Carpe Diem</i>	39808	Carter 33T	159	Zaragoza
<i>Duke</i>	39408	Catalina 36	159	Baker
<i>Au Vent</i>	760	Beneteau 38	156	Crim
<i>Windexpress</i>	4	Express 27	153	Stinson
<i>Tumblehome</i>	69046	Custom	150	Sprague
<i>Egress</i>		Hotfoot 27	150	Trunkey
<i>Sockeye</i>	119	6 Meter	126	Mitchell
<i>Tally Ho</i>	8347	Olsen 30	102	Skokan
<i>Vandis</i>	69217	WASA 38	99	Brandem

### Participating Boats in 2010 Series

<b>Name</b>	<b>Sail #</b>	<b>Type</b>	<b>Rating</b>	<b>Owner</b>
<i>Dulcinea</i>	174	J-105	93	Gardner-Brown
<i>Carmanah</i>	10372	C&C 43-1	93	Demeyer
<i>Uno</i>	26001	Sierra 26	72	Paul Faget
<i>Dos</i>	2600	Sierra 26	87	Butler
<i>Reignmaker</i>	69577	C&C 37-3	75	Pentz
<i>Annabelle Lee</i>	82	11 Meter	75	Fisher
<i>Great White</i>	18320	J-35-1	72	Weirman
<i>Tantalus</i>	73399	Express 37-2	72	Hovland
<i>Tantrum 2</i>	97807	Shock 35	72	Hennessey

#### ***WSSA Race Booklet Rule Changes for 2011:***

- 1. The order of starts has changed.***
- 2. Bremerton Yacht Club's Blake Island Race course has changed.***

### *Past West Sound Sailors of the Year, and their Yachts*

2010	Matthew Gardener-Brown	DULCINEA	J-105
2009	Steve Trunkey	EGRESS	Hotfoot 27
2008	Dan Wierman	GREAT WHITE	J-35
2007	Dan Wierman	GREAT WHITE	J-35
2006	Matthew Gardner-Brown	DULCINEA	J-105
2005	Arnie Jarlock	TENSION	Tartan Ten
2004	Arnie Jarlock	TENSION	Tartan Ten
2003	Arnie Jarlock	TENSION	Tartan Ten
2002	Bob Lubowicki	CARENE	X-Yacht 119
2001	Jim Snow	YANKEE	Ranger 37
2000	Paul Faget	EGRESS	Hotfoot 27
1999	Dan Wierman	GOOD NEWS	Bystedt 30
1998	John Kerrigan	NEW HAVEN	Baltic 38
1997	Paul Faget	EGRESS	Hotfoot 27
1996	Dan Wierman	GOOD NEWS	Bystedt 30
1995	Jim Snow	YANKEE	Ranger 37
1994	Dan Wierman	GOOD NEWS	Bystedt 30
1993	Jim Snow	YANKEE	Ranger 37
1992	Ted Morneau & Jim Wright	FLITE'	Olson 40
1991	Paul Faget	EGRESS	Hotfoot 27
1990	Ted Morneau & Jim Wright	FLITE'	Olson 40
1989	Jim Snow	ENDEAVOR	Catalina 27
1988	Dan Wierman	GOOD NEWS	Bystedt 30
1987	Bob Verger & Rich Koch	ELAN	Catalina 38
1986	Milt Michaelis	SHADOWS	Erickson 34T
1985	Gary Davis	SWAN	Thunderbird
1984	Jerry Lowrie	FAST BREAK	Ranger 28
1983	Jerry Lowrie	FAST BREAK	Ranger 28

***Past West Sound Sailors of the Year, and their Yachts***

1982	Paul Estep	ELAN	Catalina 38
1981	Jerry Lowrie	FAST BREAK	Ranger 28
1980	Jim Snow	ENDEAVOR	Catalina 27
1979	Dick Ziglar	D2Z	Catalina 27
1978	Steve Nelson	MAAKEN	Custom Miller 28

***West Sound Sailing Association Representatives  
2011***

<b>Bremerton Yacht Club</b>	<b>Rich Hunt</b> 923 Pershing Ave, A-105 Bremerton, WA 98312	360-981-4626 Rich[at]iinet.com
<b>Port Madison Yacht Club</b>	<b>Andy Parker</b> 5686 NE Cessna Lane Bainbridge, WA 98110	206-842-8035 japarker_arch[at]msn.com
<b>Port Orchard Yacht Club</b>	<b>Ole Hovland</b> 11123 Woodchuck Lane SE Port Orchard, WA 98367	253-857-3153 ole-2[at]msn.com
<b>West Sound Corinthian Yacht Club</b>	<b>Bryan Massey</b> 350 Peter Hagen Rd W. Seabeck, WA 98380	360-830-9182 bigsailingfan[at]peoplepc.com
<b>Poulsbo Yacht Club</b>	<b>Bob Moyer</b> 12075 Seabeck Hwy NW Seabeck, WA 98380	360-509-4539 re_moyer[at]msn.com
<b>WSSA Chairman</b>	<b>Tom Barrett</b> 4293 Mayhill Drive SE Port Orchard, WA 98366	360-769-8303 tbarrett[at]oz.net

**2011 WSSA TROPHY SERIES  
RACE SCHEDULE**

<u>SPONSORING YC</u>	<u>RACE</u>	<u>DATE</u>
Port Madison	Jim Depue Memorial Race	February 26
Port Orchard	Annual Spring Shakedown	March 26
West Sound Corinthian	Rich Passage Ramble	April 9
Poulsbo	Poulsbo Invitational	April 30
Port Orchard	Port Orchard Invitational	May 21
Bremerton	Blake Island	June 18 * Rev B
West Sound Corinthian	Brownsville Race	June 25 **

**Activities Following Races**

\*June 18, BYC Blake Island Race

BYC will be providing refreshments during and after the race. So when you finish, stop by the committee boat for something to eat and drink at the Port Orchard Marina. BYC will also be awarding trophies 30 minutes after the last yacht is across the line or as determined by the Race Committee.

\*\*June 25, WSCYC Brownsville Race

***The WSSA Trophy Series awards announcement and picnic will be held at Brownsville Marina in the "Upper Park". Anyone participating in any race of the WSSA Trophy Series is invited.***

All series participants are invited to tie up at the Brownsville Marina breakwater after the final race. The reserved Upper Park picnic area will include a gas barbeque. The "burgers 'n beans" begins shortly after the first boat finishes and continues until at least two hours after the last boat to finish. The Awards announcement begins about one hour after the last race results are provided to the WSSA chairman. Additional information will be posted at the WSSA website, [www.wscyc.net](http://www.wscyc.net) and follow the links.

***Skippers and crew are encouraged to attend.***

---

**Other area NON-SERIES Races**

Club	Description	Date(s)	Information
West Sound Corinthian YC Poulsbo YC	Around Bainbridge Is.	February 5	wscyc.net Race
	Sunday 5-Race PM Series	Sundays, Spring see web site	poulsboyc.org
West Sound Corinthian YC Port Madison YC	Single-handed	April 2	wscyc.net Race
	4 Race Afternoon Series	Sundays, April – July	www.portmadisonyc.org
Port Orchard YC	Spring Evening Series	Friday s, April 22 – May 20	poyc.org Sail Regatta
West Sound Corinthian YC	2011 Kitsap Harbor Festival	May 28 - 29	<a href="http://www.kitsapharborfestival.com">www.kitsapharborfestival.com</a>
West Sound Corinthian YC	June Evening Series	Fridays, June	wscyc.net Race
West Sound Corinthian YC Poulsbo YC	Bremerton/Port Orchard Evening Series	Thursdays, August	wscyc.net Race
	Sunday 5-Race PM Series	Sundays, Fall see web site	poulsboyc.org
West Sound Corinthian YC Port Orchard YC	September Evening Series	Fridays, September	wscyc.net Race
	POYC Fall Regatta	September 17	poyc.org Sail Regatta
West Sound Corinthian YC	Fowl Weather Regatta	November 19	wscyc.net Race

**West Sound Sailing Association**  
**Trophy Series**

**NOTICE OF RACE**

**1. RULES**

- 1.1 The series will be governed by the rules as defined in **The Racing Rules of Sailing 2009-2012** (RRS) including US SAILING prescriptions, as they apply.
- 1.2 All yachts shall comply with Pacific International Yachting Association (PIYA) Category III safety requirements. These requirements are available at [www.ussailing.net/piya/new/cat\\_cert.html](http://www.ussailing.net/piya/new/cat_cert.html) as a certificate.
- 1.3 The Racing Rules of Sailing (42.1, A4.2 and A9 will be changed as indicated. The changes will appear in full in the Sailing Instructions and Notice of Race, as applicable.
- 1.4 Pacific Handicap Racing Fleet - Northwest (PHRF-NW) handicapping rules shall apply. For handicap information, see web site [www.phrf-nw.org](http://www.phrf-nw.org).
- 1.5 The following Standard Rules and Racing Instructions shall apply to all races except as may be amended by individual race announcements.
- 1.6 Individual race announcements.
- 1.7 Interference with Traffic: Interference with non-racing traffic is strictly forbidden. A report of interference by the traffic to the Race Committee is sufficient cause for protest. No sounds are required.
- 1.8 Code of Federal Regulations: Title 33 (Navigation and Navigable Waters), Part 334 (Danger Zone and Restricted Area Regulations) to the extent that they apply to the area sailed. Of particular interest is 334.1230, 334.1240 and 334.1244. These are available at <http://ecfr.gpoaccess.gov/cgi/t/text/>.
- 1.9 Yachts shall not approach within 100 yards of any US naval vessel. If you need to pass within 100 yards of a U.S. naval vessel in order to ensure a safe passage, you must contact the U.S. naval vessel or the Coast Guard escort vessel on VHF-FM channel 16. See NOR 7.1.

**2. ELIGIBILITY AND ENTRY**

- 2.1 The series is open to all members of Yacht Clubs with Pacific International Yachting Association (PIYA) affiliation.
- 2.2 Eligible boats may enter each race by completing the appropriate attached form and sending it, together with the required fee to the address indicated and by the date given on each race announcement or to the race committee. The registration forms and fees must be received by the race committee, no later than thirty (30) minutes **prior to** the first warning on race day, unless otherwise specified in the individual race announcements.

Registration forms must be complete and accurate. *Participants failing to comply with these requirements will be subject to disqualification without a hearing* at the discretion of the Race Committee.

**3. ENTRY FEES:**

\$15.00	Standard Fee
\$10.00	PHRF Member
\$9.00	US SAILING Member

These fees must accompany your registration form. Checks are to be made payable to the Yacht Club on the registration form.

**4. SCHEDULE**

4.1 Dates of Racing:

<u>SPONSORING YC</u>	<u>RACE</u>	<u>DATE</u>	
Port Madison	Jim Depue Memorial Race	February 26	
Port Orchard	Annual Spring Shakedown	March 26	
West Sound Corinthian	Rich Passage Ramble	April 9	
Poulsbo	Poulsbo Invitational	April 30	
Port Orchard	Port Orchard Invitational	May 21	
Bremerton	Blake Island	June 18	Rev (B)
West Sound Corinthian	Brownsville Race	June 25	

4.2 The scheduled time of the warning signal for the first start for each race is given in the individual race announcements.

**5 COURSES AND DESCRIPTIONS OF MARKS:**

See the individual race announcements in this booklet.

**6 SCORING**

6.1 The Low Point System of Appendix A of the RRS applies. The Series has seven (7) scheduled races, of which five (5) must be completed to constitute a series.

6.2 For each race of the series, a boat that did not finish (DNF) shall be scored points for the finishing place one more than the number of boats that finished. A boat that was disqualified (DSQ) shall be scored points for the finishing place one more than the number of starters for that race. A boat that did not start (DNS) shall be scored points for the finishing place one more than the number of starters for that race. A boat that did not compete (DNC) shall be scored points for the finishing place one more than the number of series starters. This rule replaces Rule A4.2 and Rule A9."

**7 RADIO COMMUNICATIONS**

7.1 A boat shall neither make radio transmissions while racing nor receive radio communications not available to all boats. This restriction also applies to mobile telephones. However a boat may contact commercial or private traffic to determine their intent or to confirm that the boat will not impede the commercial or private vessel under current or foreseeable circumstances.

- 7.2 Channel 72 may be used for Race Committee announcements before and during racing. It is recommended that all boats monitor channels 14, 16 and 72. Channel 72 may, when not racing, also be used for pre-race check in, notification of competitor retirement, etc.

## **8 PRIZES**

- 8.1 Prizes will be awarded for each race as identified in the race announcement for that race.

- 8.2 **TROPHIES & AWARDS:** WSSA trophies will be awarded to first, second and third place in each Division. First overall will receive the perpetual *West Sound Sailor of the Year Trophy*. Series ties will be decided in favor of the yacht with the most first place finishes. If still tied, then in favor of the yacht with the most second place finishes, etc. If still tied, then in favor of the yacht with the best finish in the last race. Boats must be registered with PHRF-NW for all trophy series races to be eligible for trophies.

- 8.3 **RACE RESULTS:** Individual series race results and standings will be posted on WSSA web site ([www.wscyc.net](http://www.wscyc.net) and follow links) as soon as they are made available.

## **SAILING INSTRUCTIONS:**

- 1 RULES, DOCUMENTS, SCHEDULE OF RACES, COURSES**  
See Rules (1), Schedule (4.1), and Courses and Description of marks (5) in the Notice of Race. See also Changes to the Sailing Instructions (4) of these instructions
- 2 REGISTRATION**  
Registration procedures are given in the individual race announcements in this booklet and Notice of Race 2.2
- 3 NOTICES TO COMPETITORS**  
The race committee, during check in or registration, will provide notices to competitors in writing. Should additional notices be required, the race shall be postponed until all competitors receive said notice.
- 4 CHANGES TO SAILING INSTRUCTIONS**  
The race committee, during check in or registration, will provide changes to the Sailing Instructions in writing. Should additional changes be required, the race shall be postponed until all competitors receive said changes.
- 5 DIVISIONS:** Divisions shall be based on PHRF-NW ratings as follows:

DIVISION I	140 and under	<b>Pennant 1</b> ( <i>white w/red oval</i> )
DIVISION II	141 and over	<b>Pennant 2</b> ( <i>blue w/white oval</i> )
DIVISION III	No Flying Sails	<b>Pennant 3</b> ( <i>red, white, blue</i> )
- 5.1 The order of start shall be Division III, Division II and Division I unless modified by a General Recall. See GENERAL RECALL.
- 5.2 Boats shall register with the same rating throughout the series unless a change in assigned PHRF rating causes a change in handicap. Boats will remain in the same Division throughout the series regardless of handicap rating changes. However, boats in Division III (NFS) move to the appropriate flying sails division when they no longer qualify for NFS.
- 6 SCORING**
- 6.1 See Notice of Race paragraph 6.1 and 6.2. The series has seven (7) scheduled races, five (5) must be completed to constitute a series.
- 7 SIGNALS:** Races shall be started by using the following signals. Times shall be taken from the visual signals; the absence of a sound signal shall be disregarded.

7.1 **STARTING SEQUENCE:** (per RRS, rule 26, and repeated here for information only)

<i>Minutes before starting signal</i>	<i>Signal</i>	<i>Signal Flag</i>	<i>Sound</i>
5 minutes	<b>Warning</b>	Division flag raised	1 sound
4 minutes	<b>Preparatory</b>	'P' flag raised	1 sound
1 minute	<b>One-minute</b>	'P' flag removed	1 long sound
0 minute	<b>Start</b>	Division flag removed and next Division flag raised	1 sound

**NOTE:** The warning signal for each succeeding Division shall be made with the starting signal of the preceding Division. For the order of start, see Divisions above.

7.2 **POSTPONEMENT:** A postponement may be signaled in accordance with RRS Rule 27.3.

7.3 **INDIVIDUAL RECALLS:** Individual recalls shall be signaled in accordance with RRS Rule 29.1. The hailing of sail numbers or the yacht name for yacht(s) over the line early by the race committee is optional. However, responsibility for a correct start remains with the skipper.

7.4 **GENERAL RECALL:** A general recall for the starting division shall be signaled in accordance with RRS Rule 29.2.

7.5 **PROTESTS AND REQUESTS FOR REDRESS:** Protests and requests for redress will be made per Part 5 of the **Racing Rules of Sailing**. The race committee shall be notified of a boat's intent to protest or to file for redress at the first opportunity. Hearings shall be scheduled as required and with notification of parties. The race committee shall accept all protests and requests or refer a yacht to the appropriate place for filing.

7.6 **SHORTENED COURSE:** The course may be shortened at any mark of the course. Code flag "S" shall signal a shortened course.

**8 USE OF ENGINE:** Engines shall not be used except as necessary to avoid non-racing traffic or to aid in the rescue of a boat or crew. The yacht's skipper shall report (in writing) all details to the protest committee (see SI 7.5), which may then give redress. Note: starting the engine in advance of a possible danger but not placing it in gear, does not relieve the yacht from the reporting requirements. This supersedes RRS Rule 42.1.

**9 RADIO COMMUNICATIONS:** In fairness to all competitors, the Race Committee will not answer hails or radio calls from contestants other than for emergencies or withdrawals. However, contestants may communicate with the Race Committee if called by them, but this communication should be limited to position on the course or conditions.

**10 TIME LIMIT:** All yachts must finish within the time limit specified in each race announcement. Yachts not finishing within the allotted time will be recorded as "DNF".

**PORT MADISON YACHT CLUB  
JIM DEPUE MEMORIAL RACE**

**WSSA TROPHY SERIES RACE #1  
SATURDAY, FEBRUARY 26, 2011**

---

**WSSA STANDARD INSTRUCTIONS:** All WSSA standard instructions, found in the front of this book shall apply, except as may be amended herein.

**REGISTRATION:** Pre-registration by mail is encouraged (including PMYC yachts) by February 24<sup>th</sup> or delivered to the race committee not less than 30 minutes prior to the first warning signal.

**MOORAGE:** Limited moorage facilities are available at PMYC Friday and Saturday.

**COURSE:** For *North* wind start: all marks to Starboard. **S - Z - W - E - S**

For *South* wind start: all marks to Port. **S - E - W - Z - S**

**SIGNALS:** A *North* wind start will be indicated by a placard “N”.

A *South* wind start will be indicated by a placard “S”.

**DISTANCE:** 16.5 nautical miles, may be shortened at any mark.

**DESCRIPTION OF MARKS:**

S Start / Finish line off Point Monroe.

E Red Nun Buoy off Wing Point.

W West Point buoy.

Z Permanent race mark (Port Madison Yacht Club) approximately 1/2 NM West of dock at Jefferson Head. (Note: printed on race mark is “PMYC”, do not confuse with the SBYC mark east of this dock.)

**TIME LIMIT:** Five (5) hours for the first boat to finish and six and 1/2 hours (6½) for each division. Yachts finishing after the later time limit will be scored as DNF.

**SCORING:** Time-on-distance.

**STARTING:** **First warning 10:00.** Races shall be started by using the signals in Sailing Instruction 7.

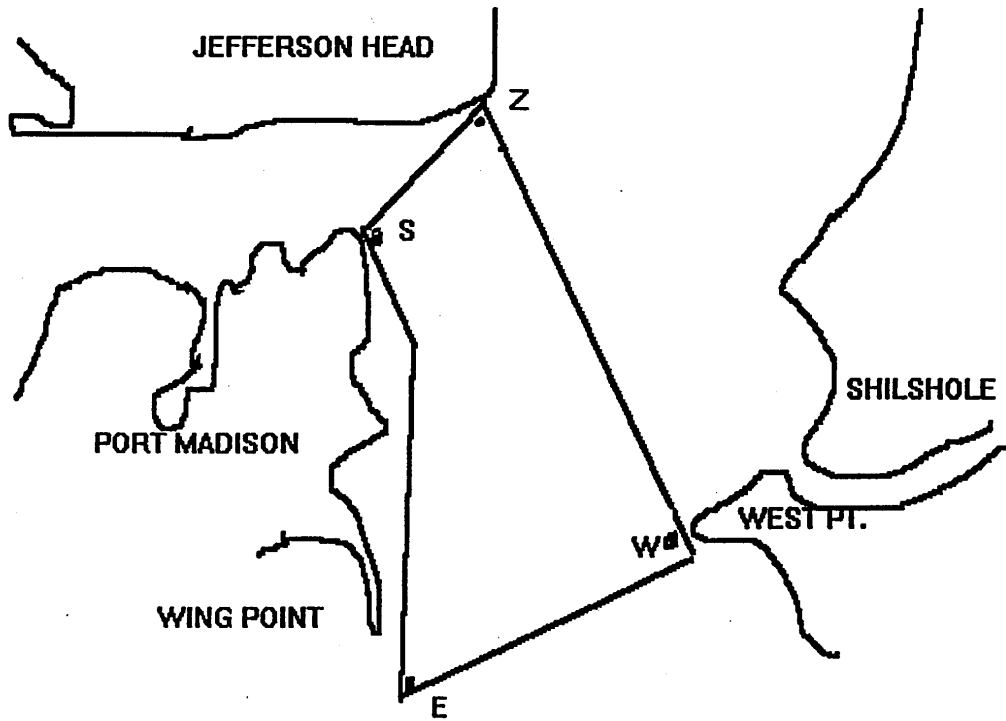
**TROPHIES:** PMYC trophies will be awarded for 1st overall and within each division as follows: 1st place (3 or more entries), 2nd place (4 or more entries), and 3rd place (5 or more entries).

**JIM DEPUE MEMORIAL RACE**

**WSSA TROPHY SERIES RACE #1**

**THIS CHART IS FOR REFERENCE ONLY !**

**DO NOT USE FOR NAVIGATION !**



**PORT ORCHARD YACHT CLUB  
36th ANNUAL SPRING SHAKEDOWN**

**WSSA TROPHY SERIES RACE #2  
SATURDAY, MARCH 26, 2011**

---

**WSSA STANDARD INSTRUCTIONS:** All WSSA Standard Instructions, found in the front of this book shall apply, except as may be amended herein.

**REGISTRATION:** Registrations must be delivered to the race committee not less than 30 minutes prior to the first warning signal. Pre-registration by mail by March 24<sup>th</sup> is optional.

**LOCATION:** Sinclair Inlet, starting off Port Orchard YC breakwater.

**COURSE:** *South* wind: 1 - 2 - 3 - 1 - 2 - 4 - 1 (leave marks to starboard).  
*North* wind: 1 - 3 - 2 - 1 - 4 - 2 - 1 (leave marks to port)

**SIGNALS:** A South wind start will be indicated by a placard "S".  
A North wind start will be indicated by a placard "N".

**DISTANCE:** 11.7 nautical miles (7.6 NM if shortened course is exercised at first finish line crossing).

**DESCRIPTION OF MARKS:**

- 1 *Start/finish line* - marked by the Race Committee (RC) flag on the breakwater (or the committee boat), and a buoy at the outboard end.
- 2 *Club mark*, white 30" diameter drum, marked "2", approximately 100 yards north of the radar target "1".
- 3 *Radar target (RA) #5* northeast of the Waterman Dock.
- 4 *Radar target (RA) #3* east of the Annapolis Ferry Dock.

**TIME LIMIT:** Five (5) hours for the first boat to finish and six (6) hours for each division. Yachts finishing after the later time limit will be scored as DNF.

**SCORING:** Time-on-distance.

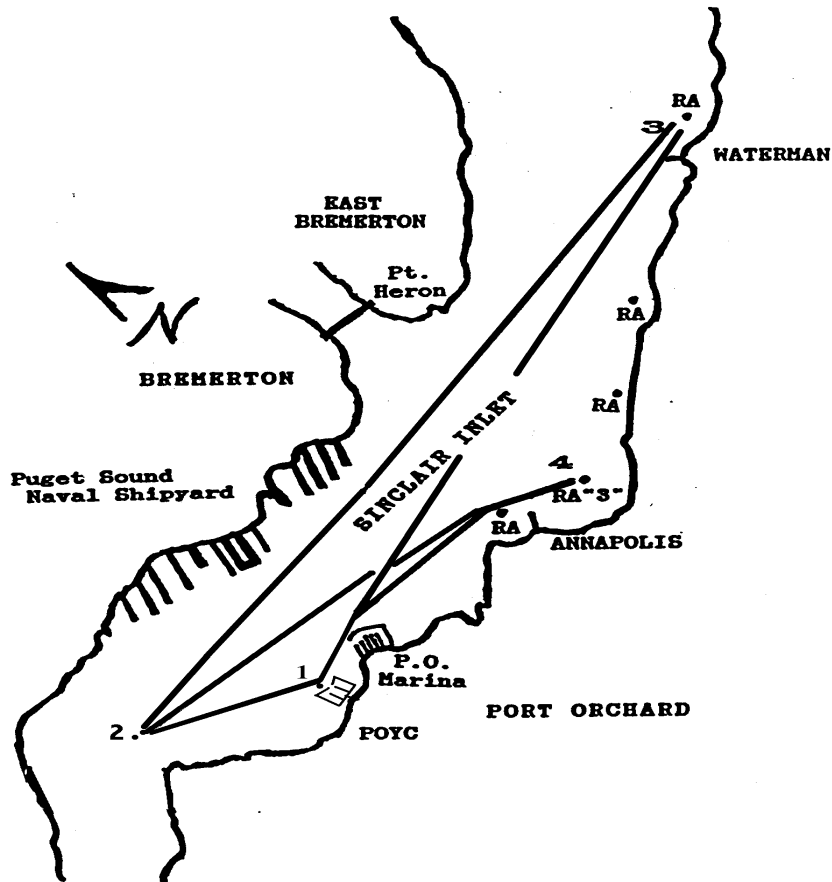
**STARTING:** **First warning 11:00.** Races shall be started by using the signals in Sailing Instruction 7.

**TROPHIES:** POYC Division trophies will be awarded as follows 1st place (3 or more entries), 2nd place (4 or more entries), and 3rd place (6 or more entries).

## 36th ANNUAL SPRING SHAKEDOWN

### WSSA TROPHY SERIES RACE #2

THIS CHART FOR REFERENCE ONLY!  
DO NOT USE FOR NAVIGATION!



*Due to the increased Security measures in affect at Puget Sound Naval Shipyard,  
**all racers are advised to stay 500 yards away from all  
Naval ships and the shipyard pier heads.**  
Coast Guard and Shipyard Police boats will enforce this zone!!*

**WEST SOUND CORINTHIAN YACHT CLUB  
30th ANNUAL RICH PASSAGE RAMBLE**

**WSSA TROPHY SERIES RACE #3  
SATURDAY, APRIL 9, 2011**

---

**WSSA STANDARD INSTRUCTIONS:** All WSSA standard instructions, found in the front of this book shall apply, except as may be amended herein.

**REGISTRATION:** Pre-registration by mail is encouraged (including WSCYC yachts) by April 7<sup>th</sup> or delivered to the race committee not less than 30 minutes prior to the first warning signal.

**COURSE:** Start off the Port Orchard Marina breakwater and sail through Rich Passage. Leave Blake Island and Bainbridge Island Reef buoy #4 **to Port**. Finish off the Port Orchard Marina breakwater. Course may only be shortened at Bainbridge Island Reef buoy #4.

**DISTANCE:** 20 nautical miles (13.3 nautical miles for shortened course).

**DESCRIPTION OF MARKS:**

1. Start - Finish Line: Marked by an orange buoy off Port Orchard Marina breakwater and an orange flag on the breakwater.
2. Blake Island: Blake Island shall represent itself.
3. Bainbridge Island Reef Buoy #4: At Bainbridge Reef, south of Beans Point.

**TIME LIMIT:** Eight (8) hours for the first boat to finish and ten (10) hours for each division. Yachts finishing after the later time limit will be scored as DNF.

**SCORING:** Time-on-distance.

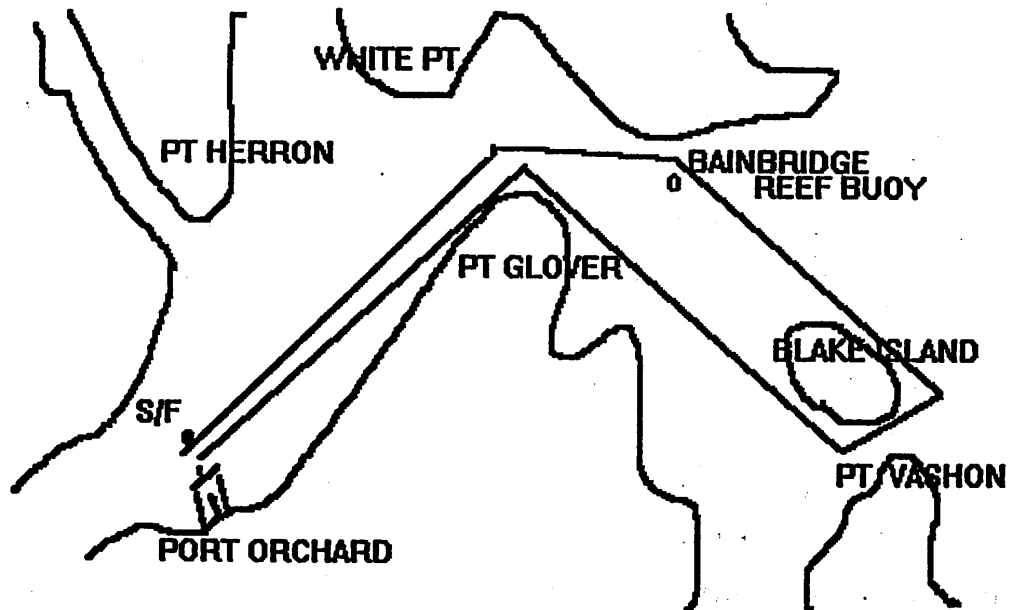
**STARTING: First warning 10:00.** Races shall be started by using the signals in Sailing Instruction 7.

**TROPHIES:** WSCYC trophies will be awarded in division as follows: 1st place (3 or more entries), 2nd place (4 or more entries), and 3rd place (5 or more entries).

## 30th ANNUAL RICH PASSAGE RAMBLE

### WSSA TROPHY SERIES RACE #3

THIS CHART IS FOR REFERENCE ONLY!  
DO NOT USE FOR NAVIGATION!



*Due to the increased Security measures in affect at Puget Sound Naval Shipyard,  
**all racers are advised to stay 500 yards away from all  
Naval ships and the shipyard pier heads.**  
Coast Guard and Shipyard Police boats will enforce this zone!!*

# POULSBO YACHT CLUB POULSBO INVITATIONAL

## WSSA TROPHY SERIES RACE #4 SATURDAY, APRIL 30, 2011

**WSSA STANDARD INSTRUCTIONS:** All WSSA Standard Instructions, found in the front of this book shall apply, except as may be amended herein.

**REGISTRATION:** Pre-registration by mail is encouraged by April 21<sup>st</sup> or delivered to the race committee not less than 30 minutes prior to the first warning signal.

**LOCATION:** Port Orchard Reach and Liberty Bay, starting approximately one-half NM North of Battle Point and finishing off Poulsbo YC Marina.

**COURSE:** Either Course A or B may be used. A course board with the proper letter displayed at or before the warning will identify the course.

**Course A:** START, University Point race buoy to port, #6 "dolphin" NE of Point Bolin to port, FINISH. Course may be shortened at the Point Bolin dolphin.

**Course B:** START, #6 "dolphin" NE of Point Bolin to port, University Point race buoy to port, FINISH. Course may be shortened at the University Point race buoy.

**DISTANCE:** Course A: 9.6 NM, Course B: 11.0 (5.6 NM if shortened at Point Bolin dolphin, 5.1NM if shortened at University Point race buoy).

### DESCRIPTION OF MARKS:

1. *Start line* - marked by the Race Committee (RC) flag on the committee boat and a PYC buoy at the outboard end.
2. *Large PYC buoy* off University Point
3. #6 "dolphin" NE of Point Bolin.
4. *Finish line* – marked by the RC flag on the PYC Marina breakwater and a PYC buoy at the outboard end.

**TIME LIMIT:** Five (5) hours for the first boat to finish and six (6) hours for each division. Yachts finishing after the later time limit will be scored as DNF.

**SCORING:** Time-on-distance.

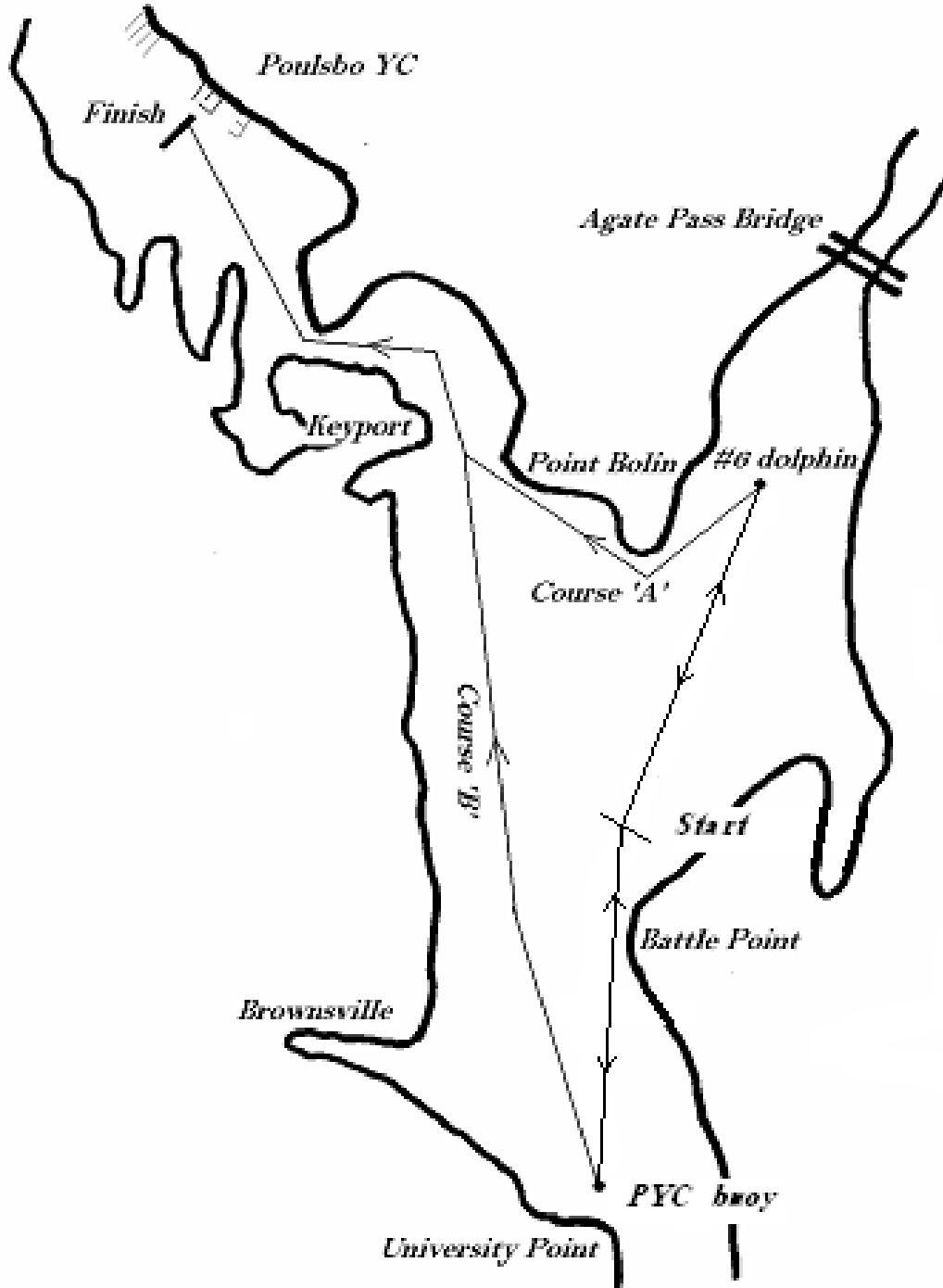
**STARTING: First warning 11:00.** Races shall be started by using the signals in Sailing Instruction 7.

**TROPHIES:** PYC Division trophies will be awarded as follows 1st place (3 or more entries), 2nd place (4 or more entries), 3rd place (6 or more entries).

The Club has a fair amount of dock space for those wanting to spend the night. The bar will be open after the race. Boats may tie up at the reciprocal dock. PYC will attempt to have the results available shortly after the race concludes.

# POULSBO INVITATIONAL

## WSSA TROPHY SERIES RACE #4



*THIS CHART IS FOR REFERENCE ONLY!  
DO NOT USE FOR NAVIGATION!*

**PORT ORCHARD YACHT CLUB  
WSSA INVITATIONAL**

**WSSA TROPHY SERIES RACE #5  
SATURDAY, MAY 21, 2011**

---

**WSSA STANDARD INSTRUCTIONS:** All WSSA standard instructions, found in the front of this book shall apply, except as may be amended herein.

**REGISTRATION:** Registrations must be delivered to the race committee not less than 30 minutes prior to the first warning signal. Pre-registration by mail by May 19<sup>th</sup> is optional.

**COURSE:** START, round the POYC Battle Point race buoy to port, FINISH.  
Course may be shortened at Battle Point.

**DISTANCE:** 16.4 NM (8.2 NM if shortened at Battle Point).

**DESCRIPTION OF MARKS:**

1. Start/finish line off the POYC breakwater.
2. Orange POYC race buoy off Battle Point.

**TIME LIMIT:** Six and one half (6 ½) hours for the first boat to finish and eight (8) hours for each division. Yachts finishing after the later time limit will be scored as DNF.

**SCORING:** Time-on-distance.

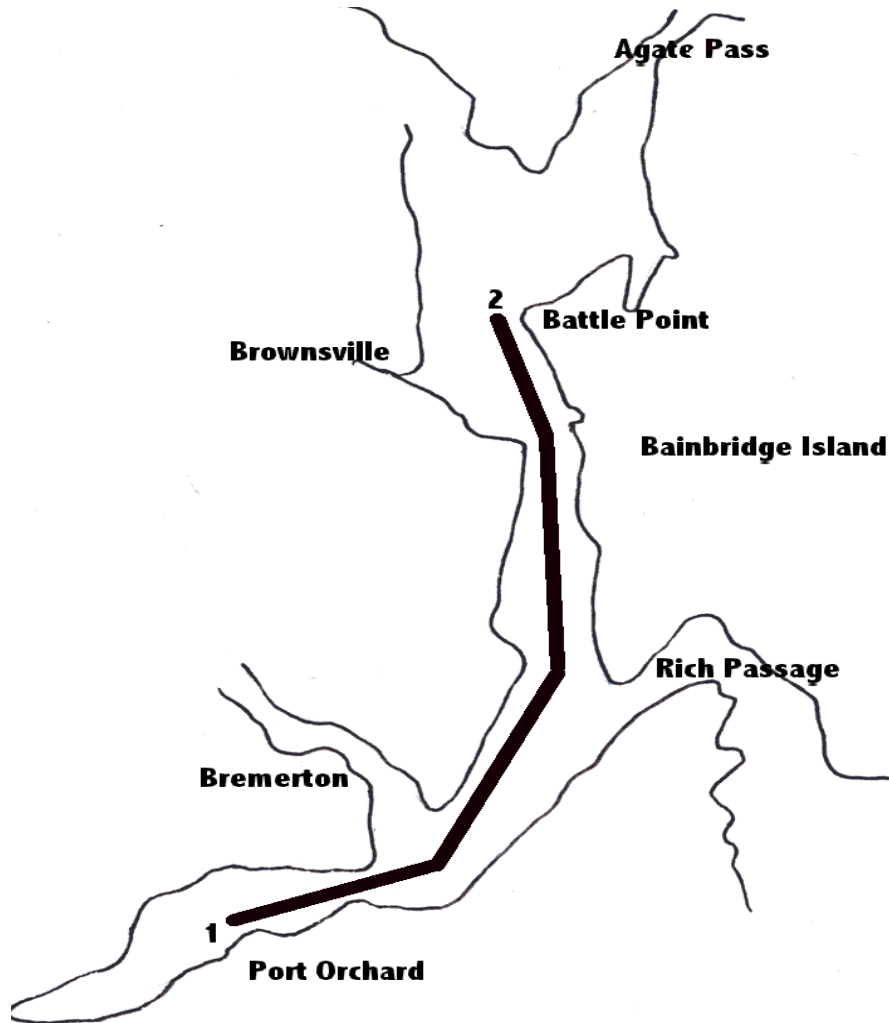
**STARTING: First warning 10:00.** Races shall be started by using the signals in Sailing Instruction 7.

**TROPHIES:** Will be awarded for 1st overall, and within each division as follows: 1st place (3 or more entries), 2nd place (4 or more), and 3rd place (5 or more).

---

**WSSA INVITATIONAL**  
**WSSA TROPHY SERIES RACE #5**

**THIS CHART IS FOR REFERENCE ONLY!**  
**DO NOT USE FOR NAVIGATION!**



*Due to the increased Security measures in affect at Puget Sound Naval Shipyard,  
**all racers are advised to stay 500 yards away from all**  
**Naval ships and the shipyard pier heads.**  
Coast Guard and Shipyard Police boats will enforce this zone!!*

**BREMERTON YACHT CLUB  
41th ANNUAL BLAKE ISLAND RACE**

**WSSA TROPHY SERIES RACE #6  
SATURDAY, JUNE 18, 2011**

---

**WSSA STANDARD INSTRUCTIONS:** All WSSA standard instructions, found in the front of this book, shall apply, except as may be amended herein.

**REGISTRATION:** Pre-registration by mail is encouraged (including BYC yachts) by 17 June or delivered to the race committee not less than 30 minutes prior to the first warning signal.

**COURSE:** Start off the “gazebo” at the foot of Trenton Ave, just east of the Washington Narrows. Round Blake Island in *either* direction, leave Bainbridge Island Reef Buoy #4 to **PORT**, return to the Port Orchard Marina break water. Course may be shortened at Bainbridge Island Reef Buoy #4.

**DISTANCE:** 19 nautical miles. Shortened course 11.3 miles.

**DESCRIPTION OF MARKS:**

1. Start line: off the “gazebo” at the foot of Trenton Ave, just east of the Washington Narrows.
2. Blake Island: Either direction.
3. Bainbridge Island Reef Buoy #4: At Bainbridge Reef, south of Bean Point to **PORT**.
4. Finish line: Port Orchard Marina Break water.

**TIME LIMIT:** Eight (8) hours for the first boat to finish and ten (10) hours for each division. Yachts finishing after the later time limit will be scored as DNF.

**SCORING:** Time-on-distance.

**STARTING: First warning 9:30.** Races shall be started by using the signals in Sailing Instruction 7.

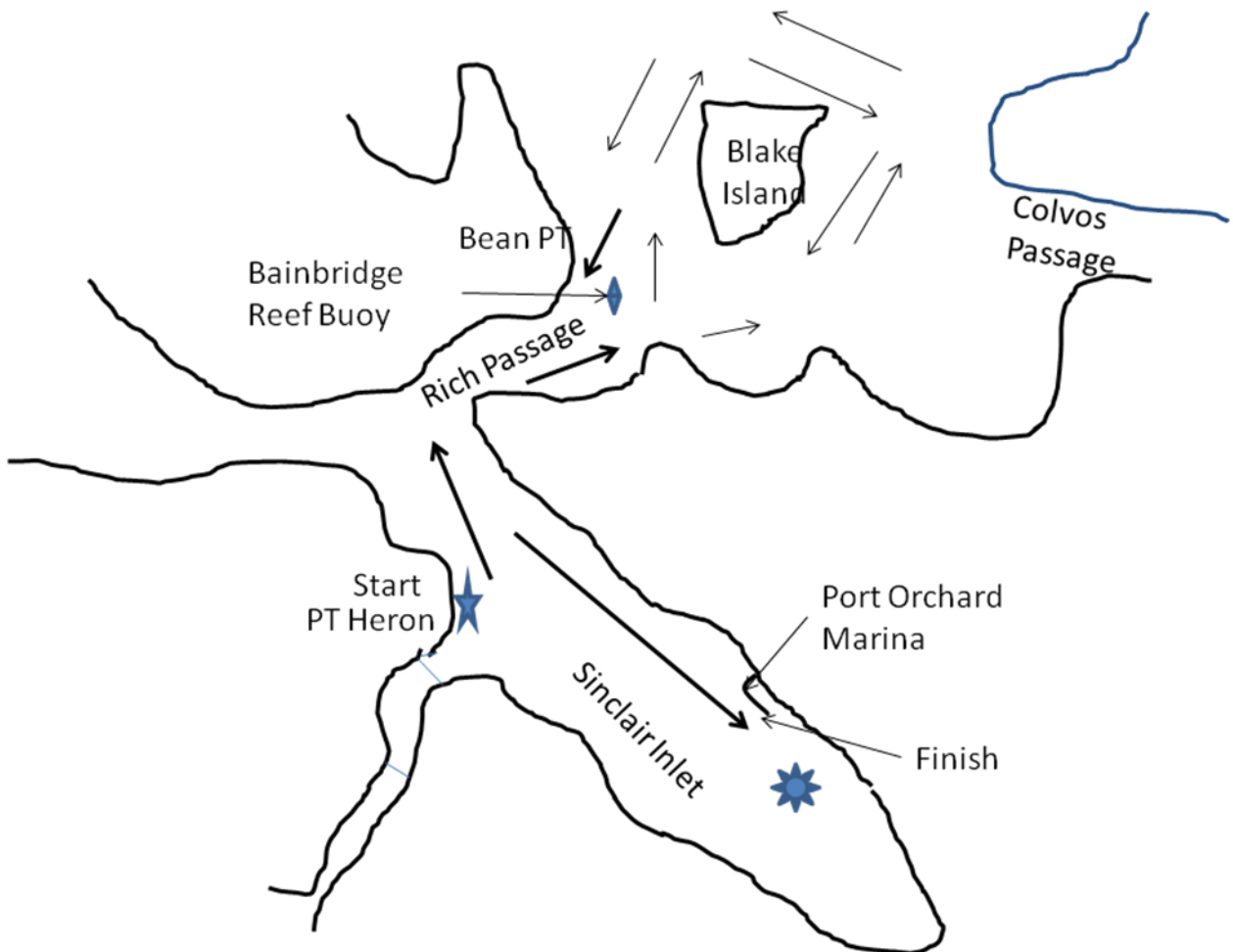
**TROPHIES:** BYC trophies will be awarded for each division as follows: 1st place (3 or more entries), 2nd (4 or more entries), 3rd place (5 or more entries).

*Information (not part of the rules):*

***BYC will be providing refreshments and awarding trophies  
at the Port Orchard Marina. See page 7 of this booklet.***

Rev (B): Date was June 4.

BREMERTON YACHT CLUB  
41<sup>ST</sup> ANNUAL BLAKE ISLAND RACE  
WSSA TROPHY SERIES RACE #6  
This chart is for reference only, DO NOT use for navigation!!!



**All racers are advised to stay 500 yards away from all Naval ships and the Puget Sound Naval Shipyard pier heads.**

**WEST SOUND CORINTHIAN YACHT CLUB  
BROWNSVILLE RACE**

**WSSA TROPHY SERIES RACE #7  
SATURDAY, JUNE 25, 2011**

---

**WSSA STANDARD INSTRUCTION:** All WSSA standard instructions found in the front of this book shall apply, except as may be amended herein.

**REGISTRATION:** Pre-registration by mail is encouraged by June 23<sup>rd</sup> or delivered to the race committee not less than 30 minutes prior to the first warning signal.

**COURSE:** *South* wind start all marks to *Port* as follows: **B - P - 6 - B - P - T - B - P - T - B**

*North* wind start all marks to *Starboard* as follows: **B - 6 - P - B - T - P - B - T - P - B**

**SIGNALS:** A South wind start will be indicated by a placard "S".  
A North wind start will be indicated by a placard "N".

**DISTANCE:** 15.25 nautical miles. (7.55 NM at first crossing, 11.4 NM at second crossing.)

**DESCRIPTION OF MARKS:**

- B** - Buoy off Brownsville Marina dock marking end of start/finish line.
- P** - Buoy off University Point.
- 6** - #6 "dolphin" NE of Point Bolin.
- T** - Buoy off Battle Point.

**TIME LIMIT:** Six (6) hours for the first boat to finish and seven and one half (7.5) hours for each division. Yachts finishing after the later time limit will be scored as DNF.

**SCORING:** Time-on-distance.

**STARTING:** **First warning 11:00.** Races shall be started by using the signals in Sailing Instruction 7.

**TROPHIES:** Will be awarded for each division as follows: 1st place (3 or more entries), 2nd place (4 or more entries), and 3rd place (5 or more entries).

Information (not part of the rules):

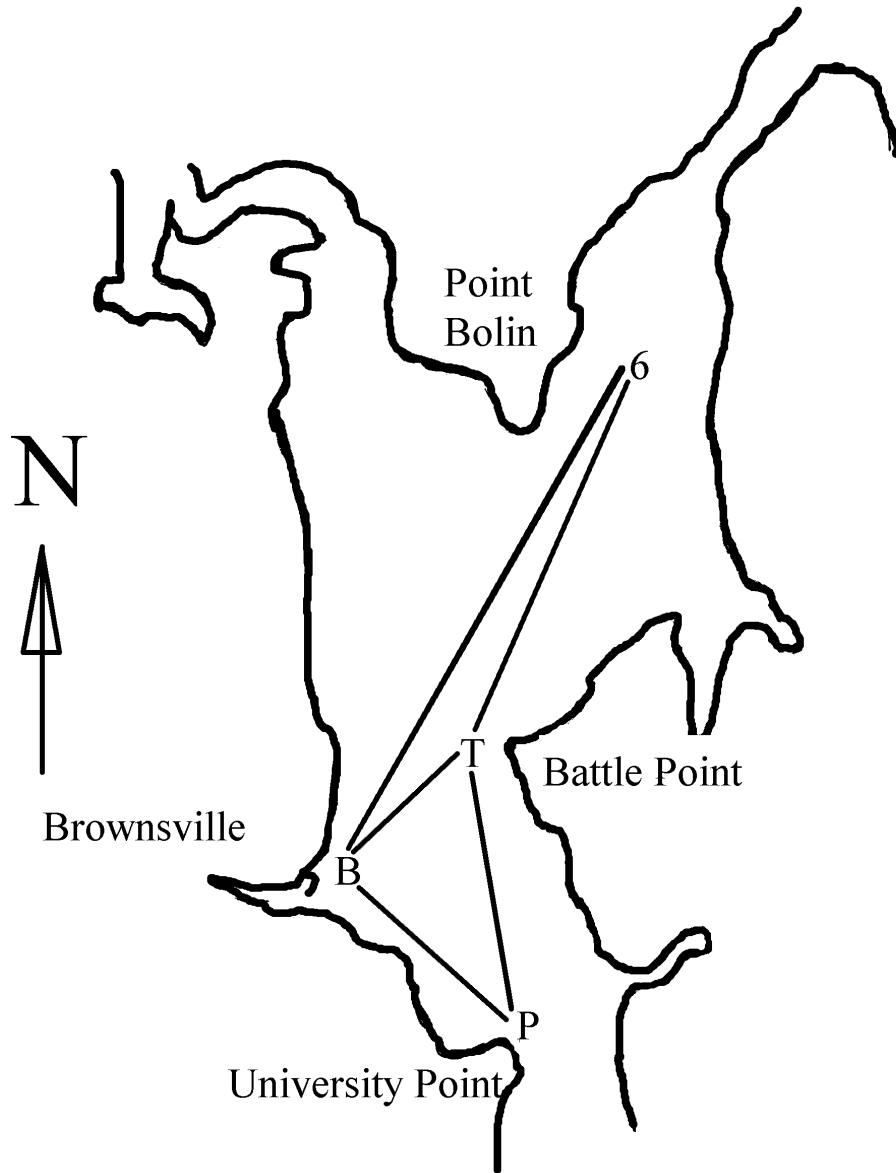
***The WSSA Trophy Series awards announcement and potluck  
will be held at Brownsville Marina. See page 7 of this booklet.  
All skippers and crew are invited.***

# BROWNSVILLE RACE

## WSSA TROPHY SERIES RACE #7

**THIS CHART IS FOR REFERENCE ONLY DO NOT USE FOR  
NAVIGATION!!!**

---



**WEST SOUND CORINTHIAN YACHT CLUB**

**24rd ANNUAL**

**AROUND BAINBRIDGE ISLAND RACE**

**SATURDAY, February 5, 2011**

---

**STANDARD INSTRUCTION:** All WSSA standard instructions, found in the front of this book shall apply, except as may be amended herein.

**REGISTRATION:** Pre-registration by mail is encouraged (including WSCYC yachts) by February 3<sup>rd</sup> or delivered to the race committee not less than 30 minutes prior to the first warning signal.

**COURSE:** START, leave Bainbridge Island to Port **or** Starboard, FINISH.

**DISTANCE:** The course is 31.5 nautical miles. There are no provisions for shortening the course.

**DESCRIPTION OF MARKS:**

The *start / finish line* is a WSCYC buoy off Port Orchard Marina breakwater and a committee race flag on the breakwater.

*Bainbridge Island* shall represent itself.

**TIME LIMIT:** Twelve (12) hours for the first boat to finish and fifteen (15) hours for each division. Yachts finishing after the later time limit will be scored as DNF.

**SCORING:** Time-on-distance.

**STARTING:** **First warning 10:00.** Races shall be started by using the signals in Sailing Instruction 7.

**TROPHIES:** WSCYC trophies will be awarded for 1st overall, and within each division as follows: 1st place (3 or more entries), 2nd place (4 or more entries), and 3rd place (5 or more entries).

***NO REFERENCE CHART SHOWN.***

***READ RACE INSTRUCTIONS!***

***NOTE: THIS RACE IS NOT PART OF THE  
WSSA TROPHY SERIES.***

*Due to the increased Security measures in affect at Puget Sound Naval Shipyard,*

***all racers are advised to stay 500 yards away from all  
Naval ships and the shipyard pier heads.***

***Coast Guard and Shipyard Police boats will enforce this zone!!***





# WEST SOUND CORINTHIAN YACHT CLUB

## RICH PASSAGE RAMBLE SATURDAY, APRIL 9, 2011

### REGISTRATION FORM

**REGISTRATION DEADLINE:** Registration forms and fees must be received by the race committee, no later than thirty (30) minutes prior to the first warning on race day. Registration forms must be complete and accurate. **Participants failing to comply with these requirements will be subject to disqualification.**

(PLEASE PRINT)

SKIPPER \_\_\_\_\_

ADDRESS \_\_\_\_\_

CITY \_\_\_\_\_ ZIP CODE \_\_\_\_\_ PHONE# \_\_\_\_\_

BOAT NAME \_\_\_\_\_ YACHT CLUB \_\_\_\_\_

SAIL# \_\_\_\_\_ BOAT MFG (CLASS) \_\_\_\_\_

HULL COLOR \_\_\_\_\_ LOA \_\_\_\_\_ PHRF MEMBER Y / N

PHRF RATING \_\_\_\_\_ % LP LARGEST GENOA \_\_\_\_\_ DIVISION \_\_\_\_\_

The undersigned hereby assumes all risk of accident, and expressly agrees that participation is at the discretion of the owners/skippers. West Sound Sailing Association, West Sound Corinthian Yacht Club, and their officers, and the race committee, shall not be liable for any loss or injury growing out of participation in this race. I am aware that I must comply with the rules of the road, and that I have no special privileges under those rules with regard to non-racing traffic.

I the undersigned also represent to the race organizers that my yacht has liability insurance currently in effect, covering property damage, personal injury and death, and that this policy covers yacht racing activities.

SIGNED \_\_\_\_\_ DATE \_\_\_\_\_

E-MAIL ADDRESS \_\_\_\_\_

ENTRY FEES:           \$15.00 STANDARD FEE  
                              \$10.00 PHRF-NW MEMBER  
                              \$9.00 US SAILING MEMBER  
  US SAILING I.D. NUMBER \_\_\_\_\_

MAKE CHECKS PAYABLE TO: **WEST SOUND CORINTHIAN YACHT CLUB**

Mail to:           BRYAN MASSEY  
                      350 Peter Hagen Rd W.  
                      Seabeck, WA 98380

**POULSBO YACHT CLUB**  
**POULSBO INVITATIONAL**  
**SATURDAY, APRIL 30, 2011**

*REGISTRATION FORM*

**REGISTRATION DEADLINE:** Registration forms and fees must be received by the race committee, no later than thirty (30) minutes prior to the first warning on race day. Registration forms must be complete and accurate. **Participants failing to comply with these requirements will be subject to disqualification.**

(PLEASE PRINT)

SKIPPER \_\_\_\_\_

ADDRESS \_\_\_\_\_

CITY \_\_\_\_\_ ZIP CODE \_\_\_\_\_ PHONE# \_\_\_\_\_

BOAT NAME \_\_\_\_\_ YACHT CLUB \_\_\_\_\_

SAIL# \_\_\_\_\_ BOAT MFG (CLASS) \_\_\_\_\_

HULL COLOR \_\_\_\_\_ LOA \_\_\_\_\_ PHRF MEMBER Y / N

PHRF RATING \_\_\_\_\_ % LP LARGEST GENOA \_\_\_\_\_ DIVISION \_\_\_\_\_

The undersigned hereby assumes all risk of accident, and expressly agrees that participation is at the discretion of the owners/skippers. West Sound Sailing Association, Poulsbo Yacht Club, and their officers, and the race committee, shall not be liable for any loss or injury growing out of participation in this race. I am aware that I must comply with the rules of the road, and that I have no special privileges under those rules with regard to non-racing traffic.

I the undersigned also represent to the race organizers that my yacht has liability insurance currently in effect, covering property damage, personal injury and death, and that this policy covers yacht racing activities.

SIGNED \_\_\_\_\_ DATE \_\_\_\_\_

E-MAIL ADDRESS \_\_\_\_\_

ENTRY FEES:           \$15.00 STANDARD FEE  
                          \$10.00 PHRF-NW MEMBER  
                          \$9.00 US SAILING MEMBER  
  US SAILING I.D. NUMBER \_\_\_\_\_

MAKE CHECKS PAYABLE TO: **POULSBO YACHT CLUB**

MAIL TO:           REGATTA CHAIR SAIL  
                          Poulsbo Yacht Club  
                          18129 Fjord Drive N.E., Suite T  
                          Poulsbo, 98370

**PORT ORCHARD YACHT CLUB**

**INVITATIONAL RACE  
SATURDAY, MAY 21, 2011**

*REGISTRATION FORM*

**REGISTRATION DEADLINE:** Registration forms and fees must be received by the race committee, no later than thirty (30) minutes prior to the first warning on race day. Registration forms must be complete and accurate. **Participants failing to comply with these requirements will be subject to disqualification.**

(PLEASE PRINT)

SKIPPER \_\_\_\_\_

ADDRESS \_\_\_\_\_

CITY \_\_\_\_\_ ZIP CODE \_\_\_\_\_ PHONE# \_\_\_\_\_

BOAT NAME \_\_\_\_\_ YACHT CLUB \_\_\_\_\_

SAIL# \_\_\_\_\_ BOAT MFG (CLASS) \_\_\_\_\_

HULL COLOR \_\_\_\_\_ LOA \_\_\_\_\_ PHRF MEMBER Y / N

PHRF RATING \_\_\_\_\_ % LP LARGEST GENOA \_\_\_\_\_ DIVISION \_\_\_\_\_

The undersigned hereby assumes all risk of accident, and expressly agrees that participation is at the discretion of the owners/skippers. West Sound Sailing Association, Port Orchard Yacht Club, and their officers, and the race committee, shall not be liable for any loss or injury growing out of participation in this race. I am aware that I must comply with the rules of the road, and that I have no special privileges under those rules with regard to non-racing traffic.

I the undersigned also represent to the race organizers that my yacht has liability insurance currently in effect, covering property damage, personal injury and death, and that this policy covers yacht racing activities.

SIGNED \_\_\_\_\_ DATE \_\_\_\_\_

E-MAIL ADDRESS \_\_\_\_\_

ENTRY FEES:            \$15.00 STANDARD FEE  
                             \$10.00 PHRF-NW MEMBER  
                             \$9.00 US SAILING MEMBER    US SAILING I.D. NUMBER \_\_\_\_\_

MAKE CHECKS PAYABLE TO: **PORT ORCHARD YACHT CLUB**

MAIL TO:            OLE HOVLAND  
                             11123 Woodchuck Lane SE  
                             Port Orchard, WA. 98367

**BREMERTON YACHT CLUB**

**BLAKE ISLAND RACE  
SATURDAY, JUNE 18, 2011**

*REGISTRATION FORM*

**REGISTRATION DEADLINE:** Registration forms and fees must be received by the race committee, no later than thirty (30) minutes prior to the first warning on race day. Registration forms must be complete and accurate. **Participants failing to comply with these requirements will be subject to disqualification.**

(PLEASE PRINT)

SKIPPER \_\_\_\_\_

ADDRESS \_\_\_\_\_

CITY \_\_\_\_\_ ZIP CODE \_\_\_\_\_ PHONE# \_\_\_\_\_

BOAT NAME \_\_\_\_\_ YACHT CLUB \_\_\_\_\_

SAIL# \_\_\_\_\_ BOAT MFG (CLASS) \_\_\_\_\_

HULL COLOR \_\_\_\_\_ LOA \_\_\_\_\_ PHRF MEMBER Y / N

PHRF RATING \_\_\_\_\_ % LP LARGEST GENOA \_\_\_\_\_ DIVISION \_\_\_\_\_

The undersigned hereby assumes all risk of accident, and expressly agrees that participation is at the discretion of the owners/skippers. West Sound Sailing Association, Bremerton Yacht Club, and their officers, and the race committee, shall not be liable for any loss or injury growing out of participation in this race. I am aware that I must comply with the rules of the road, and that I have no special privileges under those rules with regard to non-racing traffic.

I the undersigned also represent to the race organizers that my yacht has liability insurance currently in effect, covering property damage, personal injury and death, and that this policy covers yacht racing activities.

SIGNED \_\_\_\_\_ DATE \_\_\_\_\_

E-MAIL ADDRESS \_\_\_\_\_

ENTRY FEES:           \$15.00 STANDARD FEE  
                              \$10.00 PHRF-NW MEMBER  
                              \$9.00 US SAILING MEMBER  
  US SAILING I.D. NUMBER \_\_\_\_\_

MAKE CHECKS PAYABLE TO: **BREMERTON YACHT CLUB**

MAIL TO:           BREMERTON YACHT CLUB  
                          2700 Yacht Haven Way  
                          Bremerton, Wa 98312

# WEST SOUND CORINTHIAN YACHT CLUB

## BROWNSVILLE RACE SATURDAY, JUNE 25, 2011

### REGISTRATION FORM

**REGISTRATION DEADLINE:** Registration forms and fees must be received by the race committee, no later than thirty (30) minutes prior to the first warning on race day. Registration forms must be complete and accurate. **Participants failing to comply with these requirements will be subject to disqualification.**

(PLEASE PRINT)

SKIPPER \_\_\_\_\_

ADDRESS \_\_\_\_\_

CITY \_\_\_\_\_ ZIP CODE \_\_\_\_\_ PHONE# \_\_\_\_\_

BOAT NAME \_\_\_\_\_ YACHT CLUB \_\_\_\_\_

SAIL# \_\_\_\_\_ BOAT MFG (CLASS) \_\_\_\_\_

HULL COLOR \_\_\_\_\_ LOA \_\_\_\_\_ PHRF MEMBER Y / N

PHRF RATING \_\_\_\_\_ % LP LARGEST GENOA \_\_\_\_\_ DIVISION \_\_\_\_\_

The undersigned hereby assumes all risk of accident, and expressly agrees that participation is at the discretion of the owners/skippers. West Sound Sailing Association, West Sound Corinthian Yacht Club, and their officers, and the race committee, shall not be liable for any loss or injury growing out of participation in this race. I am aware that I must comply with the rules of the road, and that I have no special privileges under those rules with regard to non-racing traffic.

I the undersigned also represent to the race organizers that my yacht has liability insurance currently in effect, covering property damage, personal injury and death, and that this policy covers yacht racing activities.

SIGNED \_\_\_\_\_ DATE \_\_\_\_\_

E-MAIL ADDRESS \_\_\_\_\_

ENTRY FEES:           \$15.00 STANDARD FEE  
                              \$10.00 PHRF-NW MEMBER  
                              \$9.00 US SAILING MEMBER  
  US SAILING I.D. NUMBER \_\_\_\_\_

MAKE CHECKS PAYABLE TO: **WEST SOUND CORINTHIAN YACHT CLUB**

Mail to:           BRYAN MASSEY  
                      350 Peter Hagen Rd W.  
                      Seabeck, WA 98380

**WEST SOUND CORINTHIAN YACHT CLUB**

**AROUND BAINBRIDGE ISLAND RACE**

**SATURDAY, February 5, 2011**

*REGISTRATION FORM*

**REGISTRATION DEADLINE:** Registration forms and fees must be received by the race committee, no later than thirty (30) minutes prior to the first warning on race day. Registration forms must be complete and accurate. **Participants failing to comply with these requirements will be subject to disqualification.**

(PLEASE PRINT)

SKIPPER \_\_\_\_\_

ADDRESS \_\_\_\_\_

CITY \_\_\_\_\_ ZIP CODE \_\_\_\_\_ PHONE# \_\_\_\_\_

BOAT NAME \_\_\_\_\_ YACHT CLUB \_\_\_\_\_

SAIL# \_\_\_\_\_ BOAT MFG (CLASS) \_\_\_\_\_

HULL COLOR \_\_\_\_\_ LOA \_\_\_\_\_ PHRF MEMBER Y / N

PHRF RATING \_\_\_\_\_ % LP LARGEST GENOA \_\_\_\_\_ DIVISION \_\_\_\_\_

The undersigned hereby assumes all risk of accident, and expressly agrees that participation is at the discretion of the owners/skippers. West Sound Sailing Association, West Sound Corinthian Yacht Club, and their officers, and the race committee, shall not be liable for any loss or injury growing out of participation in this race. I am aware that I must comply with the rules of the road, and that I have no special privileges under those rules with regard to non-racing traffic.

I, the undersigned, also represent to the race organizers that my yacht has liability insurance currently in effect, covering property damage, personal injury and death, and that this policy covers yacht racing activities.

SIGNED \_\_\_\_\_ DATE \_\_\_\_\_

E-MAIL ADDRESS \_\_\_\_\_

ENTRY FEES: \$5.00

MAKE CHECKS PAYABLE TO: **WEST SOUND CORINTHIAN YACHT CLUB**

Mail to: BRYAN MASSEY  
350 Peter Hagen Rd W.  
Seabeck, WA 98380